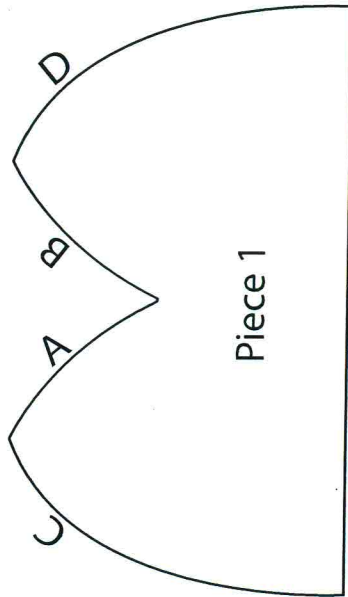


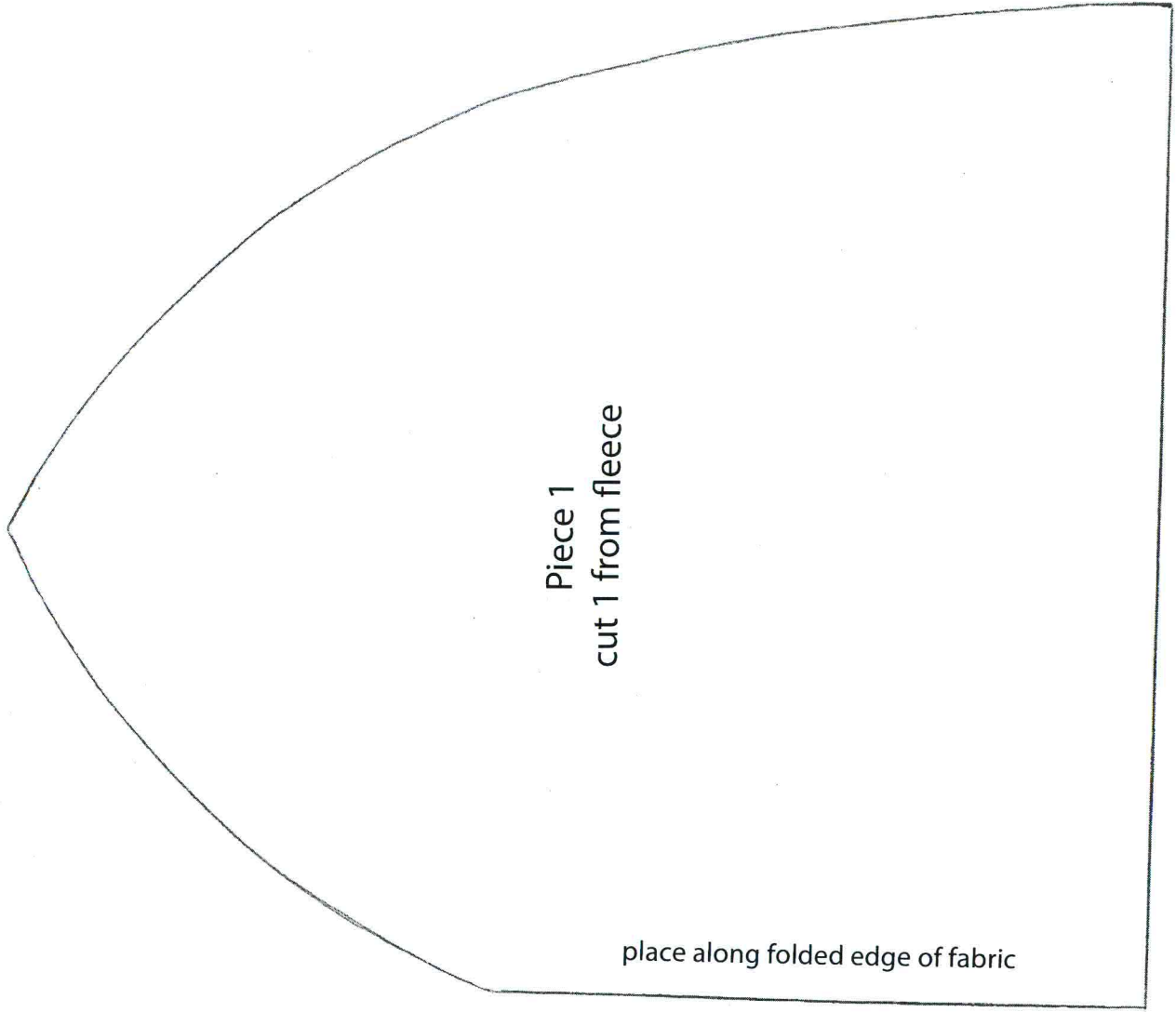
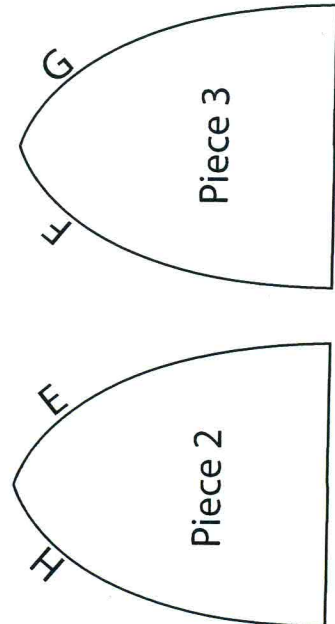
basic fleece hat pattern  
copyright Natalia Heilke, 2012  
for personal use only - not for resale or commercial use

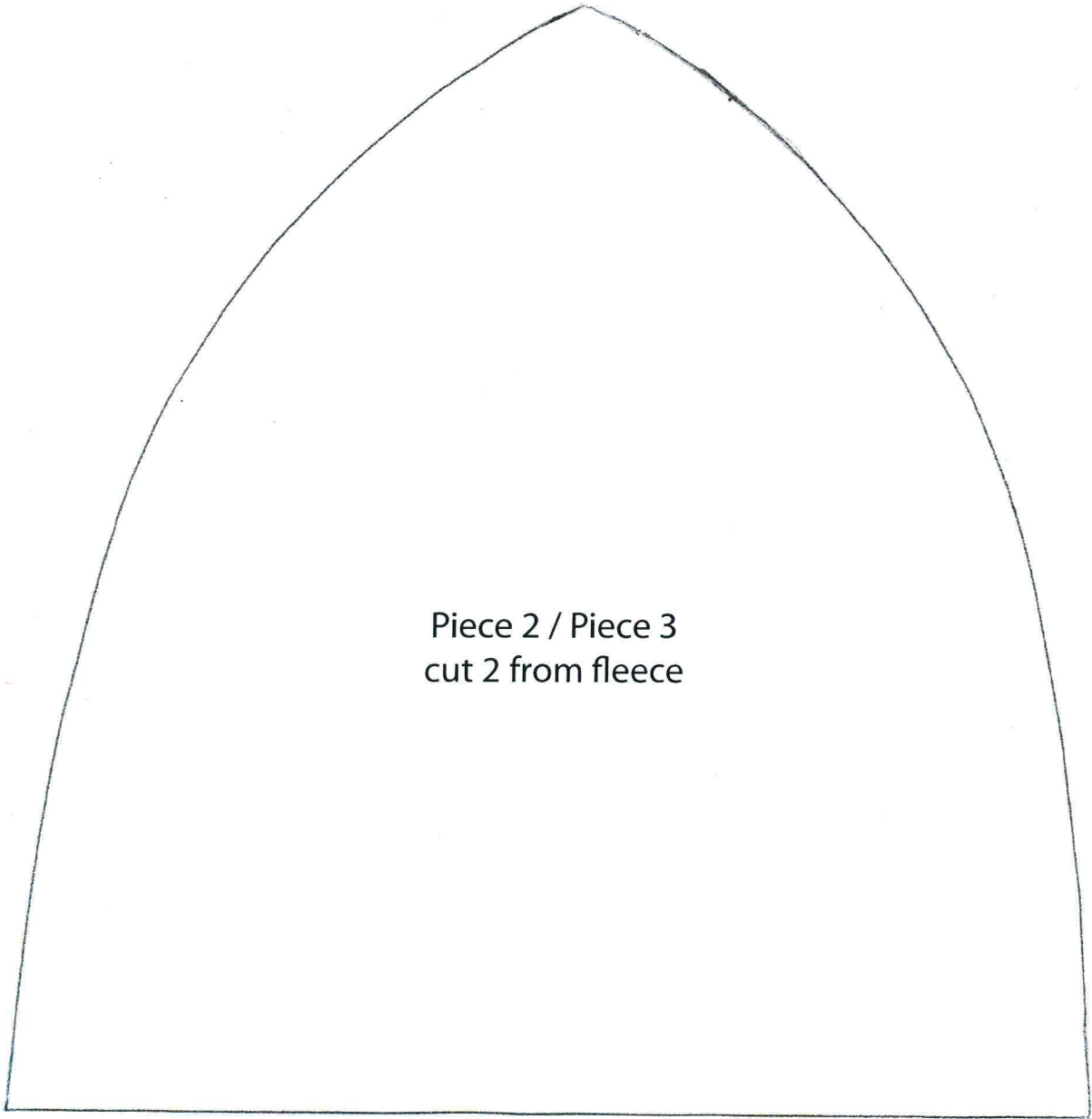
**Instructions:**

Cut one of Piece 1 along a folded edge of fabric, so that you have one piece that looks like the image below. When constructing the hat, adhere to the labels in the diagram below.



Cut two of Piece 2/3, so that you have two identical pieces, as in the image below. When constructing the hat, adhere to the labels in the diagram below.





Piece 2 / Piece 3  
cut 2 from fleece